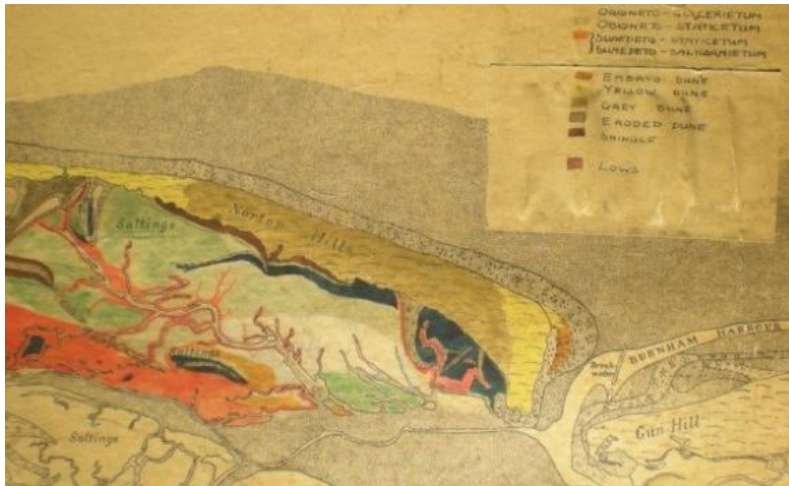


## Science and technology

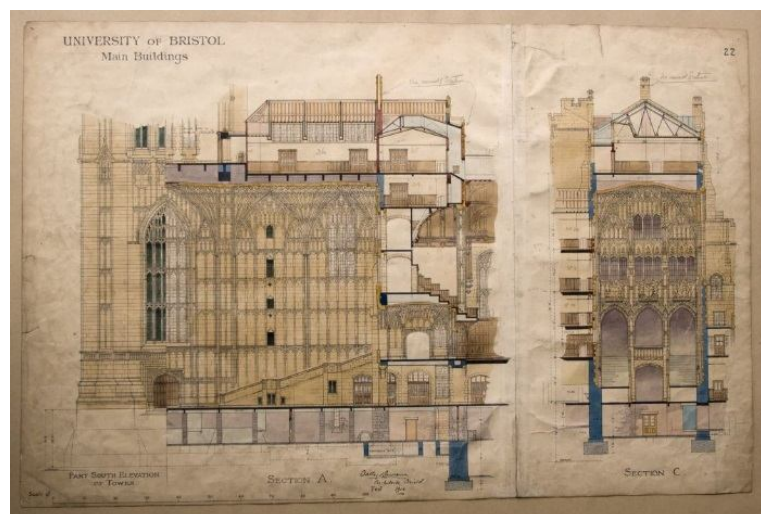
### University of Bath Archives & Research Collections

The correspondence and research papers of D. E. Coombe (1927-1999), botanical ecologist, document his interest in historical ecology, his pioneering work in plant growth and his career-long study of unique, changing habitats in Norfolk, Cambridgeshire and Cornwall.



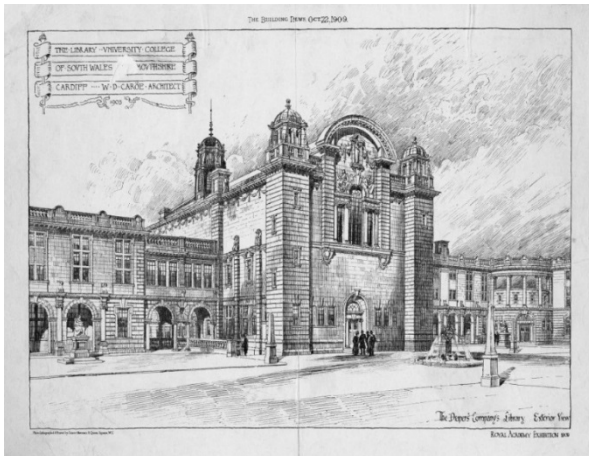
### University of Bristol Special Collections

Extensive archives of University related scientists in the fields of agriculture, biology, chemistry, engineering, geology, physics, and other disciplines, dating from the 16th century to the 2000s complemented by large collections of rare and specialised books. There are also collections relating to the Long Ashton Research Station, University and University College Departments, the architectural practice of Sir George Oatley (1863-1950), the Eyles Geological Collection, and the Bristol Society of Architects.



## Special Collections & Archives (SCOLAR), Cardiff University

Architectural collections range from 16th century rare books, to 20th century city plans, with the UK's main collection of local and structure plans for both cities and rural areas.



## University of Exeter Heritage Collections

Home to one of the largest collections of material relating to the moving image in Britain the Bill Douglas Cinema Museum contains over 75,000 items including early film technologies such as film projectors, praxinoscopes, lantern slides and lanterns and a rare Lumiere Cinematographe.

