



Engineering and
Physical Sciences
Research Council

Impact Roadshow 2020: How to handle impact in EPSRC proposals

Glenn Goodall, Head of Economic Impact

Michelle Lascelles, Senior Impact Manager

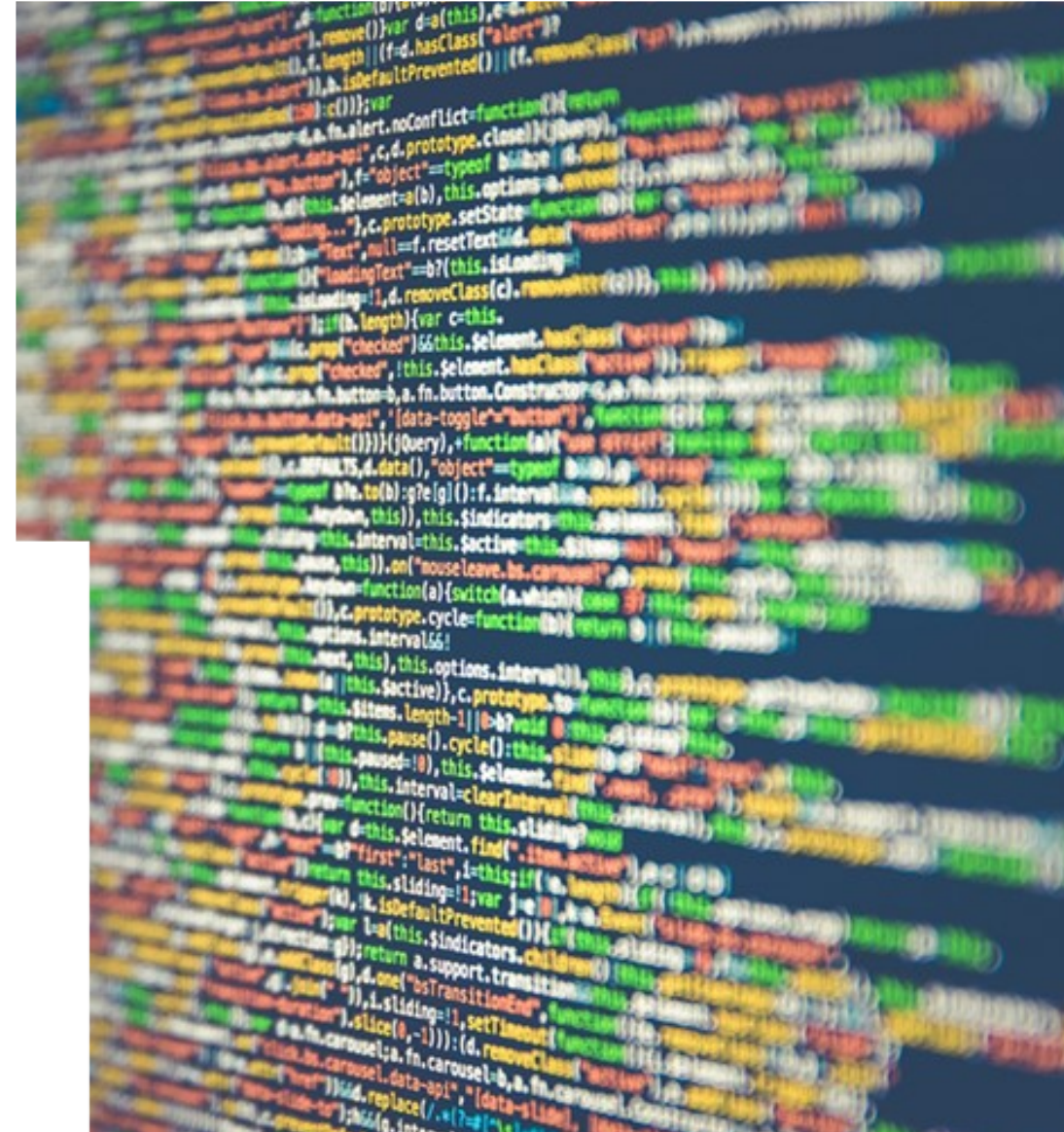
Deepali Lodhia, Portfolio Manager for Impact

Ann Chalkley, Portfolio Support Manager for Impact

Welcome!

What we will cover today...

1. Impact in the brave new world
 - a) Recent changes
 - b) UKRI perspective / EPSRC's new philosophy
2. Handling Impact in applications to EPSRC
 - a) Planning new activities with Impact in mind
 - b) At application stage
 - c) Enabling impact whilst carrying out research
3. Final remarks
4. Q&A





Engineering and
Physical Sciences
Research Council

Impact in the brave new world

Glenn Goodall, Head of Economic Impact

Impact is important

The changes should enable you to...

- ...**streamline proposals** at the point of application
- ...be more creativity in **integrating impact** activities into research programmes
- ...be free to include the impact activities **appropriate** to the project and discipline
- ...think about impact across the full **lifecycle of research**



What Has Changed

Impact is now a **core consideration throughout the grant application** process and showing how the applicant(s) will **maximise the impact** of the proposed research should therefore be **intrinsic to the proposal** itself in a way that is **appropriate** to the nature and scope of the research being proposed.

For example:

- A **discovery research** proposal may focus principally on the generation of new knowledge
- Proposals with significant elements of **applied research** may have impacts related to economic and societal benefits

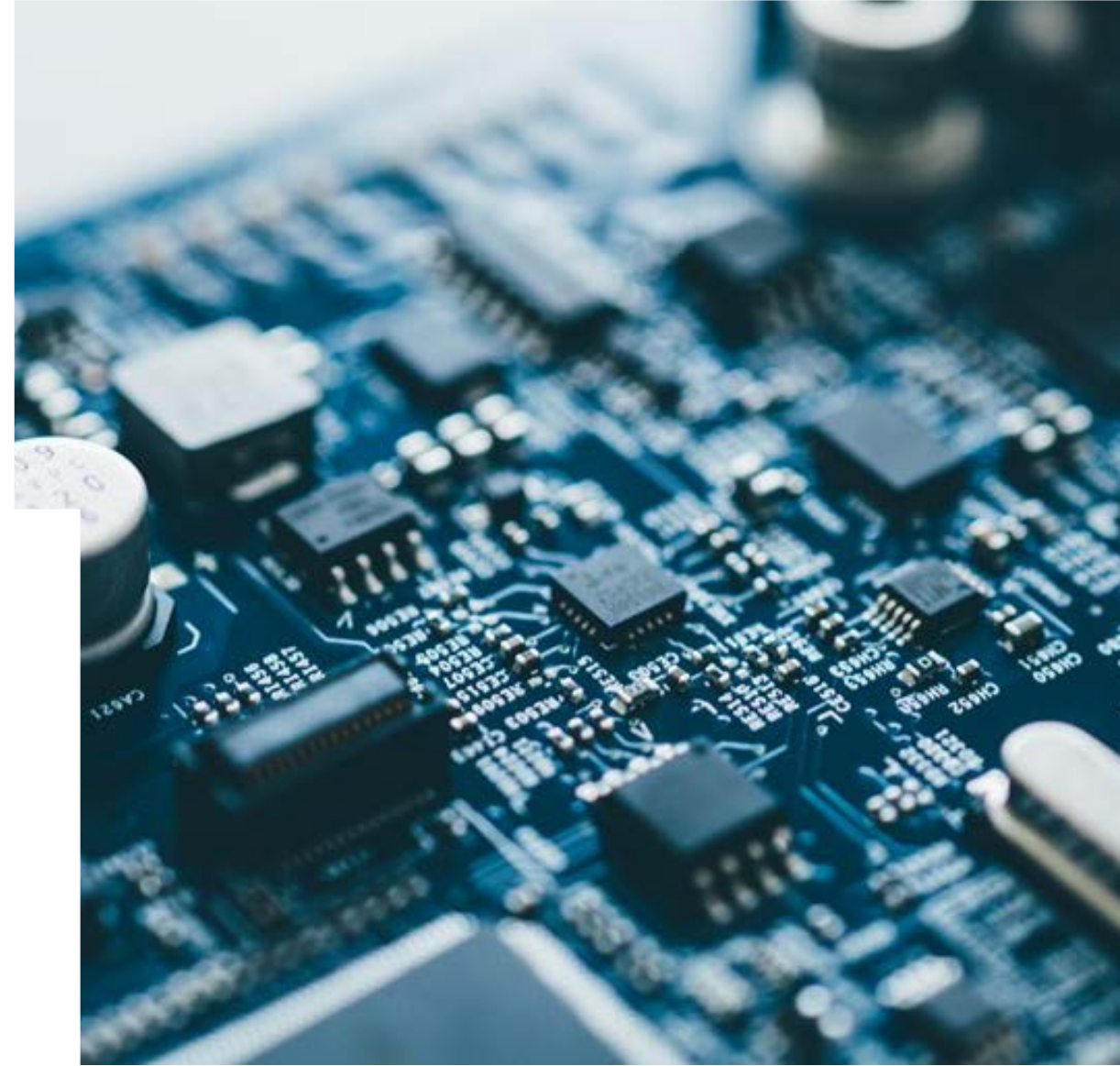
Impact beyond EPSRC

At UKRI Level

- Changes at pace
- Working together on common understanding

Stakeholders

- As important to Gov't as ever!
- Other academics / Knowledge Exchange
- Business / Industrial involvement

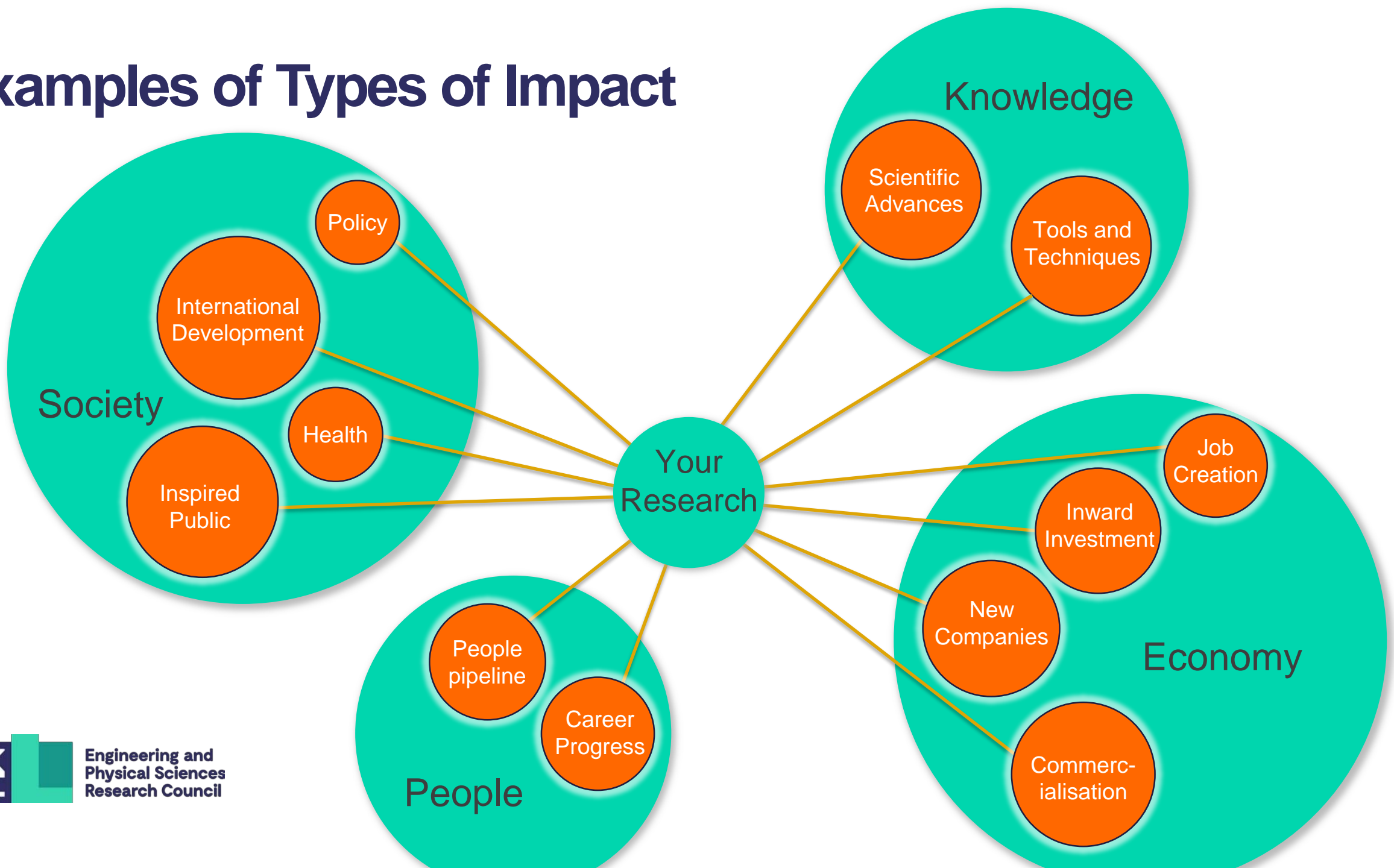


EPSRC new philosophy to maximise impact

Making the most of the Impact journey



Examples of Types of Impact





Engineering and
Physical Sciences
Research Council

Handling Impact in applications to EPSRC

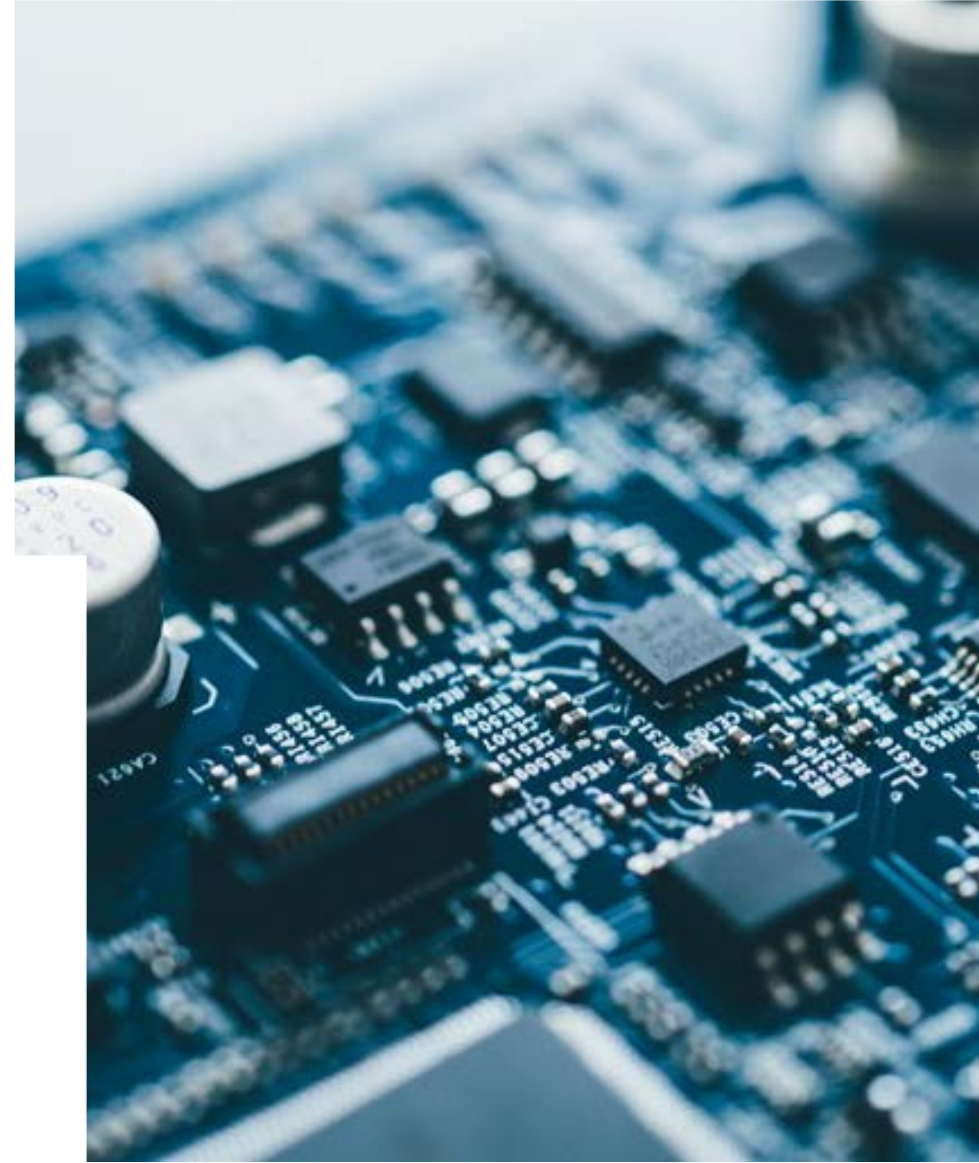
Michelle Lascelles, Senior Impact Manager

Planning New Activities with Impact in mind

For each impact related activity consider:

- The objective and potential **benefits**
- Potential **stakeholders**
- Use of **engagement**
- Appropriate **timings**
- **Costs** and **resources** involved

Space is Limited – Make it **specific** and **succinct**



Impact at the Application Stage

Integrate Impact throughout the case for support

- Track record
- Background
- National Importance
- Research Hypothesis and Objectives
- Programme and Methodology



Impact at the Application Stage

Resources and Management

- Who will be **responsible** for impact activities?
- How much will it **cost**?
- How are your **partners** involved?

EPSRC **strongly encourage** the full costing and request for resources for any relevant impact activities.



Impact at the Application Stage

Examples of Impact Costs

- Travel costs
- Partnership building
- People exchange / secondments
- Training for researchers
- Engage expert staff
- Onward routes to commercialisation
- Comms
- Knowledge Exchange
- Data management
- Sharing of novel tools/techniques



Impact at the Application Stage

This is new for reviewers too...

- Include Impact activities and milestones in the Gantt chart
- Flag impact activities through the case for support
- If it aligns to activities in a work package include an impact heading
- For activities that don't align to work packages but underpin the overall impact development activities, create a specific section and use it to tie the different areas of impact content together.



Impact at the Application Stage

Completing reviews and on panels

Impact is covered under the **Quality criteria**, when assessing:

- Think about what impact activities might be appropriate
- Are activities full costed and itemised?
- Which stakeholders might be involved? Is it obvious how they are engaged



Enabling impact whist carrying out research

EPSRC interested in the outputs, outcomes and impacts of research

- Case studies or insights
- Short, medium and long term
- The PM or themes you interact with will be interested
- Always sign post your research data outputs on Research Fish



Enabling impact whilst carrying out research

Remember

- EPSRC does not expect applicants to predict the impact of their research.
- Reviewers are not expected to make assumptions about the probability of the benefits being fully delivered.
- There is no expectation for impacts to be realised within the lifetime of the research project.



Further Help

Guidance Material

<https://epsrc.ukri.org/files/funding/calls/case-for-support-guidance/>

Contact your **EPSRC Portfolio Manager** (contact details available on our website)

Impact email:
AcceleratingImpact@epsrc.ukri.org

Further Help

University Impact Contacts

Cardiff: risresearchdevelopment@cardiff.ac.uk

Bath:

Research Impact Manager - Dr Emma Gibbard - elg64@bath.ac.uk

Research Development Managers - Dr Chloe Turner cat56@bath.ac.uk, Ana Amelia Alvarez Serra aas35@bath.ac.uk

Bristol:

Katie Cooper (Science) k.cooper@bristol.ac.uk

Phil Plumber (Engineering) phil.plumber@bristol.ac.uk

Exeter: Please contact our shared inbox: emps-res-apps@exeter.ac.uk

GW4: info@gw4.ac.uk



Engineering and
Physical Sciences
Research Council

Thank you

We will now take a short break
and reconvene in 10 minutes for
the Q&A

Questions in advance

Is EPSRC welcoming application which budgets external contracting for impact (e.g. a company that runs social media for your project on your behalf)?

What does EPSRC expect to see in End-user engagement strategy (like in the precision manufacturing call). And how does it differ from Pathways to Impact?



Engineering and
Physical Sciences
Research Council

Questions?



Engineering and
Physical Sciences
Research Council

Thank you



Engineering and Physical Sciences Research Council



@EPSRC



EPSRCvideo