

#GW4Highlights2025

# GW4

# GW4 Alliance Year in Review: 2025

Greater than the sum of our parts





## GW4 Highlights 2025



GW4 welcomed a new Director to lead the Alliance's strategic vision and strengthen collaboration across its member universities and beyond.

#GW4Highlights2025



## GW4 Highlights 2025

Dr Rebecca Leithall joined GW4 as Interim Head of the Alliance, providing guidance and stewardship ahead of the arrival of the new Director.



#GW4Highlights2025



## GW4 Highlights 2025



High profile showcases at the House of Commons in Westminster and the Senedd in Cardiff Bay, highlighted our cutting-edge, collaborative research projects and demonstrated the value of regional research and innovation.



#GW4Highlights2025



## GW4 Highlights 2025

GW4 and Wellcome celebrated collaborative efforts that boost innovative research, regional engagement, and economic development.



#GW4Highlights2025

## Funding Wins

Greater than the sum of our parts



# GW4

## Funding Wins

**TRANSFORMING  
HOMES**



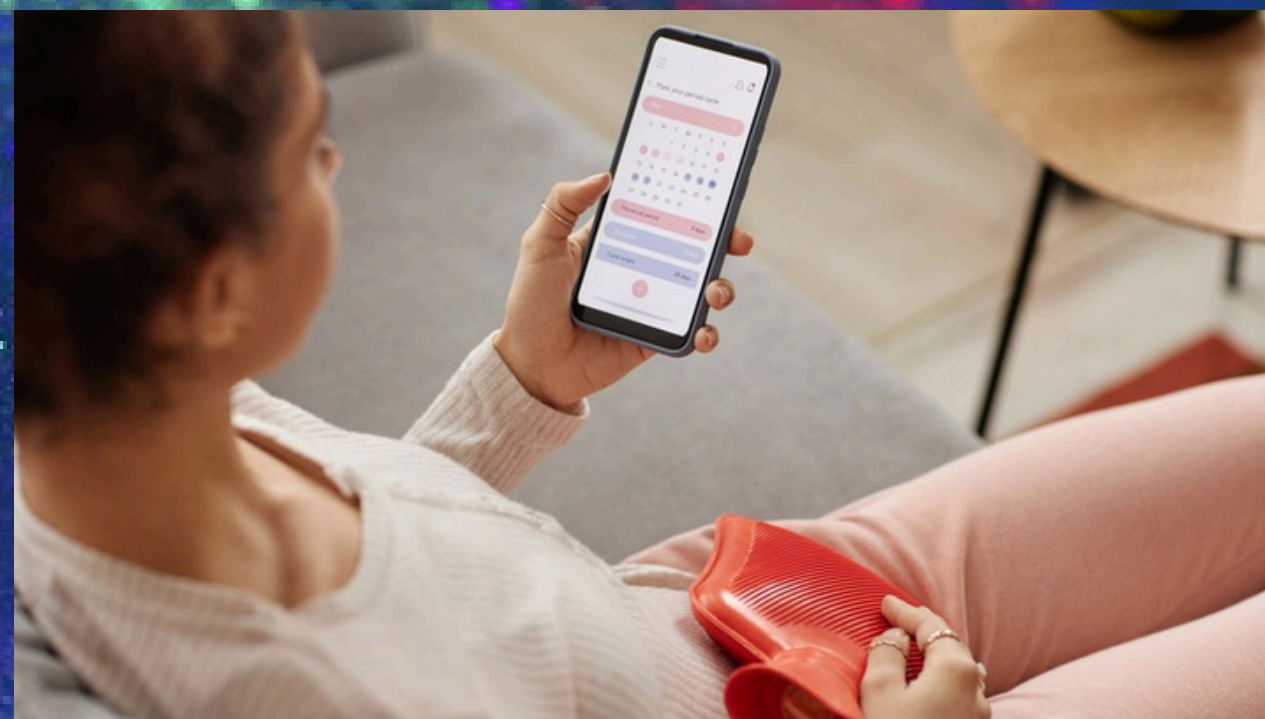
The Transforming Homes project received an additional £3 million to deliver healthier, more sustainable homes for future generations and have a showcase at the Green Transition Ecosystem exhibition in the Design Museum in London.

#GW4Highlights2025



## Funding Wins

GW4 researchers received  
\$4.5 million from Wellcome  
Leap to develop a  
world-leading resource  
for menstrual health research.





## Funding Wins



A GW4 Crucible project attracted Google investment to develop innovative wearable technology for stress monitoring.

#GW4Highlights2025

GW4

# Research & Innovation Development

Greater than the sum of our parts



# GW4

## Research & Innovation Development



New seed funding supported interdisciplinary projects examining the role of creativity in shaping society, culture, and the economy.

#GW4Highlights2025



# Research & Innovation Development

The first GW4 Imaging Network Day brought together experts to share advances in imaging technologies and foster collaboration.



#GW4Highlights2025



# Research & Innovation Development



Eight collaborative projects received GW4 Development Awards, supporting the exploration of new research ideas and strengthening interdisciplinary links.



# Research & Innovation Development

The GW4 Generator Fund  
funded eight new  
research communities,  
driving innovation  
and cross-institutional collaboration.



# GW4

## Research & Innovation Development



Six research projects  
focused on mental health  
received funding  
after a successful  
GW4 bid development event.

#GW4Highlights2025

# GW4

## People, Skills & Research Culture

Greater than the sum of our parts



# GW4

## People, Skills & Research Culture



GW4 hosted the second  
GW4 Open Research Week  
and Open Research Prize,  
led by the University of Bath for  
2025.

#GW4Highlights2025

# GW4

## People, Skills & Research Culture

GW4 launched Re-Culture to transform research culture by promoting inclusivity, openness, and collaboration.



GW4

**RE-CULTURE:**

RESEARCH CULTURE  
CHANGE PROGRAMME

#GW4Highlights2025

# GW4

## People, Skills & Research Culture



GW4 Connect provided new tailored peer support for neurodivergent researchers, and continued to support PGRs from the global majority.



## People, Skills & Research Culture

GW4 continued to advocate for improved childcare access for PGRs, as part of our campaign calling on Government to extend the undergraduate Childcare Grant to postgraduate researchers.





## People, Skills & Research Culture



The GW4 AMR Alliance launched a new cross-institutional and cross-disciplinary mentorship scheme to enhance the professional development of early and mid-career antimicrobial resistance researchers.



# People, Skills & Research Culture

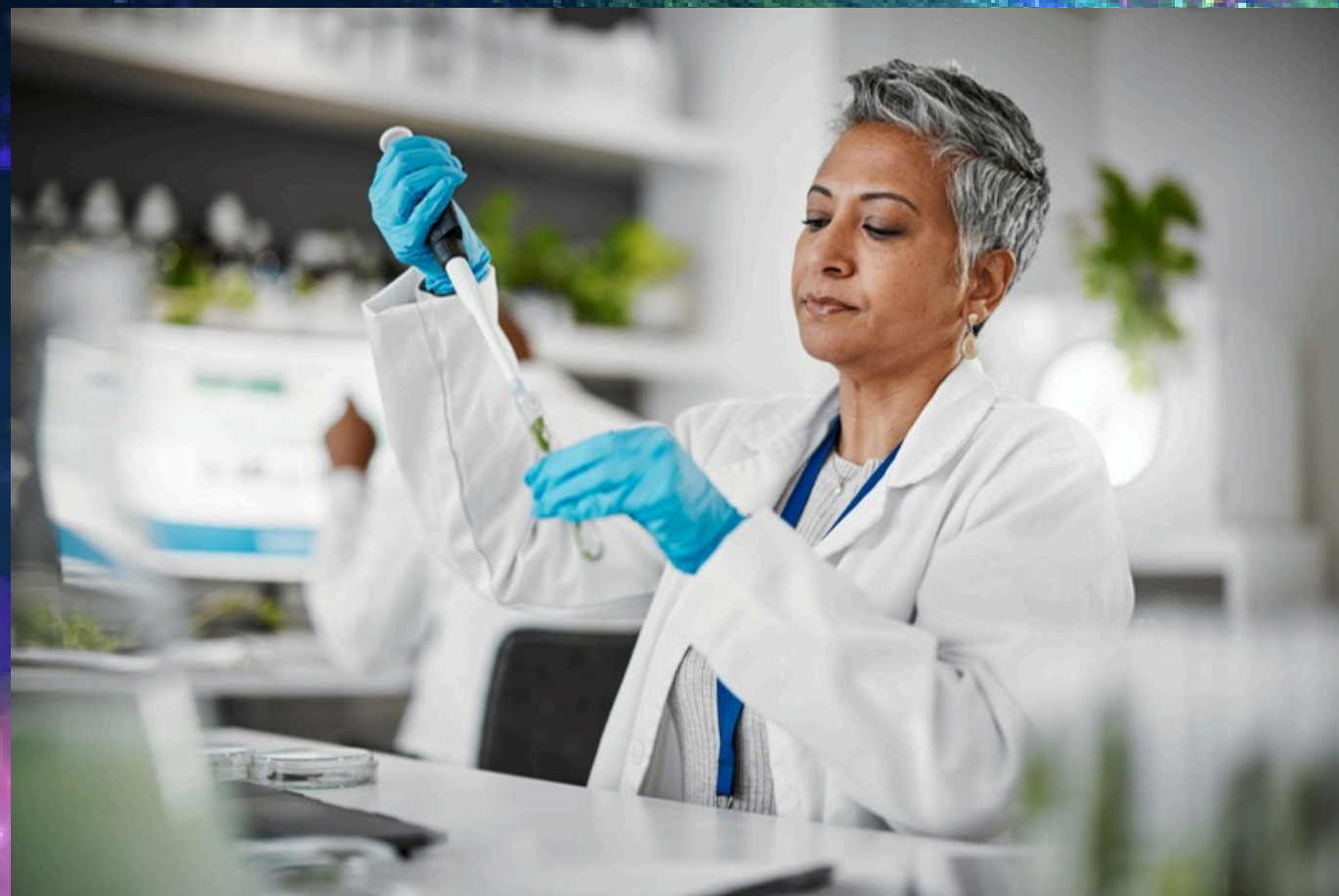
Twenty-nine researchers  
joined this year's  
Crucible cohort  
to investigate  
creativity's role in shaping  
societies and cultures.



#GW4Highlights2025

# GW4

## People, Skills & Research Culture



GW4 universities united  
to embed sustainability principles  
into research  
and innovation strategies.

#GW4Highlights2025



## People, Skills & Research Culture

The GW4 PGR Parents and Carers Network published a report on the unique challenges faced by Postgraduate Research students with parental and caregiving responsibilities.



# GW4

## People, Skills & Research Culture



X-CITED marked the programme's halfway mark in September with a Community of Practice Conference. Plus they held the first of three innovative Industrial Challenge Sandpits, bringing together industry and research technical professionals.

#GW4Highlights2025

## Partnerships

Greater than the sum of our parts





## Partnerships

GW4 co-founded the South West Health & Life Sciences Cluster Development Initiative, alongside Health Innovation West of England, Health Innovation South West and South West Life Sciences.

**South West  
Health and  
Life Sciences  
Cluster  
Development  
Initiative**

# Find out more about the GW4 Alliance

Visit our website: [www.gw4.ac.uk](http://www.gw4.ac.uk)

Find us on LinkedIn: **GW4 Alliance**

Follow us on X: **@GW4Alliance**

BlueSky: **@gw4alliance.bsky.social**

Greater than the sum of our parts

# GW4

